

What size inverter should I use for a 17kw photovoltaic system





Overview

Here's how inverter sizes usually correlate: Panels: 3,000 – 6,000 W Inverter: 3,000 W to 5,500 W Panels: 6,000 – 10,000 W Inverter: 5,500 W to 8,000 W (some size down to 5 kW depending on shading) Panels: 10,000 – 20,000 W Inverter: one or two inverters of a combined 10 kW–15 kW What size solar inverter do I Need?

A 4.5 kW array (or ten 450-watt solar panels) would just about cover your consumption. The type of solar panels you choose can also impact the size of the inverter you need. Different types of solar panels have different wattage ratings and efficiency levels. The three main types of solar panels are monocrystalline, polycrystalline, and thin film.

How much solar power can a 5kw inverter produce?

Under the Clean Energy Council rules for accredited installers, the solar panel capacity can only exceed the inverter capacity by 33%. That means for a typical 5kW inverter you can go up to a maximum of 6.6kW of solar panel output within the rules.

Should your inverter size match your solar panel size?

Match your inverter to your lifestyle, not just your roof. If you're running a fridge, home office, and PS5 all day, size accordingly. If you're barely home, go leaner. Here's the cheat code: your inverter size should usually match your solar panel system's size in kilowatts.

Should a solar inverter be oversized?

However, slight over-sizing of the solar panels compared to the inverter capacity (up to 133% under certain guidelines) can sometimes yield better overall efficiency due to the variable nature of solar irradiation throughout the day. The ratio for inverter sizing often depends on specific system requirements and local regulations.

How do I choose a solar inverter?



This is the most critical factor in solar inverter sizing. Check the total wattage of your solar array (DC) and use it to calculate the appropriate inverter output (AC). For optimal results, a 6.6kW array typically pairs with a 5kW inverter, falling within the accepted array-to-inverter ratio of 1.15 to 1.33.

How efficient is a solar inverter?

As long as the input from the panels falls within the range of the window, the inverter can be considered to be operating optimally. In the graph below, the red line represents an average inverter efficiency and the green arrow represents the power output from your solar panels.



What size inverter should I use for a 17kw photovoltaic system



Solar Inverter Sizing Guide for Maximum Efficiency , Mingch

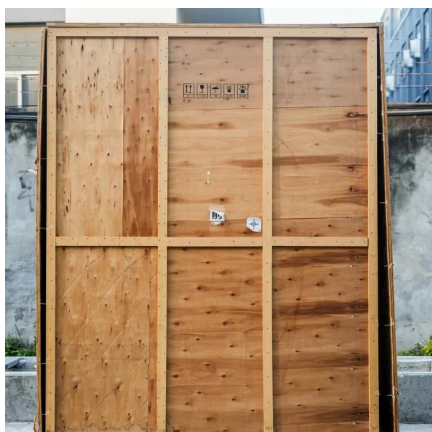
This article explains how to calculate your inverter size, what affects it, and how to avoid costly mistakes, especially when using high-efficiency solutions like MINGCH Electrical's ...

[WhatsApp](#)

[How To Size A Solar Inverter in 3 Easy Steps](#)

In this guide, we share 3 easy steps on how to size a solar inverter correctly. We explain the key concepts that determine solar inverter sizing including your power needs, the type and number ...

[WhatsApp](#)



[How To Size an Inverter: Solar Inverter Sizing Explained](#)

When sizing an inverter, calculate the total wattage needed and understand surge vs. continuous power. Choose the right size with a 20% safety margin. Factor in simultaneous ...

[WhatsApp](#)

Sizing inverters to optimise solar panel system efficiency

To calculate the ideal inverter size for your solar PV system, you should consider the total wattage of your solar panels and the specific conditions of



your installation site.

[WhatsApp](#)



How do you properly size an inverter for a house? : r/solar

Discussion of solar photovoltaic systems, modules, the solar energy business, solar power production, utility-scale, commercial rooftop, residential, off-grid systems and more. Solar ...

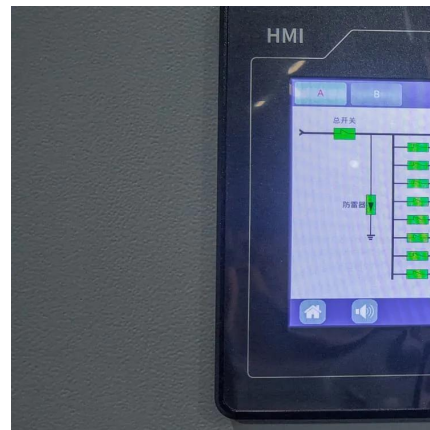
[WhatsApp](#)



[What Size Inverter You Need \(Calculations + Battery\)](#)

Inverters are made with different power capacities, depending on the size of the system you want to run. For this discussion, we are looking at a domestic inverter that you can ...

[WhatsApp](#)



What Size Solar Inverter Do I Need? Experts Break It Down

But before you start soaking up the sun, you'll need the right inverter to match your system. This guide breaks down what size solar inverter you actually need--so your setup ...

[WhatsApp](#)



How to Choose the Right Size Solar Inverter: Step-by-Step with ...

Wondering what size solar inverter do I need for your solar system? This guide walks you through calculating inverter size based on panel capacity, power usage, and safety ...

[WhatsApp](#)



[What Size Inverter Do I Need for a Solar Panel System?](#)

To help you choose the right size solar inverter and matching battery, a solar inverter size selection comparison table is provided below. This table will help you quickly ...

[WhatsApp](#)

Contact Us

For catalog requests, pricing, or partnerships, please visit:
<https://straighta.co.za>