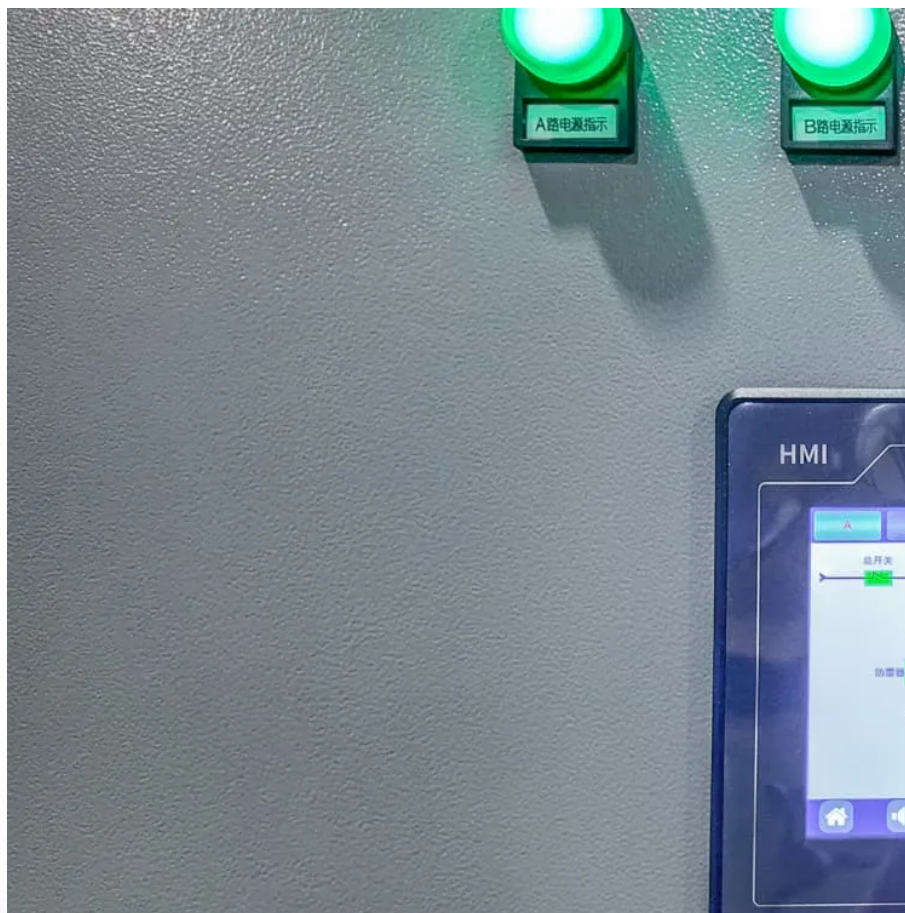


# What kind of battery is usually used for outdoor power supply





## Overview

---

What types of batteries are used to store electricity in buildings?

To store electricity in buildings, batteries are most commonly used. Examples include lead acid, molten salt (sodium sulphur, sodium metal hydride), lithium ion and flow batteries.

What kind of battery do you supply for your Leisures?

We supply a massive range of leisure batteries from many different manufacturers for almost all leisures that have ever been built. Below you will find our complete range of 75Ah leisure batteries. We have tested each 75Ah and we have highlighted our star performer from the result of our tests.

Are Ope batteries good for outdoor maintenance?

Here's how to power up for your outdoor maintenance needs. Most OPE batteries are rechargeable, and all offer exceptional ease of use and low maintenance. Save time and effort with no cords to worry about and no need for fuel mixing, carburetor cleaning or winterizing at season's end. Here are the main battery types you can choose between.

Are lithium ion batteries a good choice?

TIP: Compared to other types, lithium-ion batteries have a longer run time between charges, making them a good choice for larger yards and gardens. Cycle life is the overall life of the battery. It represents the number of times a battery can be recharged before its performance degrades. TIP: Proper care helps optimize battery life.

Which battery is best for my Ope?

Explore your options to find the most ergonomic match for your OPE. Also known as lead acid batteries, these 6V or 12V batteries are used in applications where recharging isn't feasible. BEST FOR: Riding lawn mowers, lawn tractors, lawn irrigation and electric fence systems.



Why should you use an OPE battery?

Battery type plays a critical role in OPE performance. Here's how to power up for your outdoor maintenance needs. Most OPE batteries are rechargeable, and all offer exceptional ease of use and low maintenance. Save time and effort with no cords to worry about and no need for fuel mixing, carburetor cleaning or winterizing at season's end.



## What kind of battery is usually used for outdoor power supply

---



### Guide to Choosing the Right Batteries for Outdoor Activities

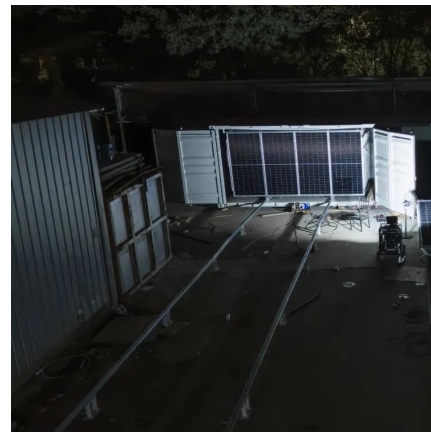
Selecting the right battery involves balancing factors like duration, performance, cost, and environmental impact. This guide provides an in-depth look at different battery types, ...

[WhatsApp](#)

### Types of Batteries Used in Portable Power Stations , Guide

Learn about the different types of batteries used in portable power stations, including Lithium-ion, LiFePO4, and Lead-acid batteries. Explore their advantages, lifespan, energy efficiency, and ...

[WhatsApp](#)



### Which Battery Is Best for Outdoor Power Stations?

Common battery types include IMR (Lithium Manganese Oxide), IFR (Lithium Iron Phosphate), and ICR (Lithium Cobalt Oxide). Each battery type has unique features in terms of ...

[WhatsApp](#)



### What kind of battery is used for energy storage power supply

The lifespan of energy storage batteries depends significantly on the type of battery, usage patterns, and maintenance practices. Lead-acid



batteries may last 3 to 5 years ...

[WhatsApp](#)



### Battery type for solar powered outdoor applications? : r/esp32

A nickel-cadmium battery (NiCd or NiCad) is a rechargeable battery used for portable computers, drills, camcorders, and other small battery-operated devices requiring an even power discharge.

[WhatsApp](#)

### Different Types Of UPS Batteries

There are three main types of batteries used in uninterruptible power supplies: Nickel-Cadmium, Lead-Acid, and Lithium-Ion. There isn't a single "best" UPS battery technology - the choice ...

[WhatsApp](#)



### Here's How to Choose the Best Battery for Your Outdoor Power ...

Most OPE batteries are rechargeable, and all offer exceptional ease of use and low maintenance. Save time and effort with no cords to worry about and no need for fuel mixing, carburetor ...

[WhatsApp](#)





## Powering Your Blink Cameras: Understanding Battery Sizes and ...

Battery Size And Types For Blink Cameras Blink cameras utilize specific battery types that are designed for their energy efficiency needs. Most Blink outdoor and indoor ...

[WhatsApp](#)



## Contact Us

---

For catalog requests, pricing, or partnerships, please visit:  
<https://straighta.co.za>