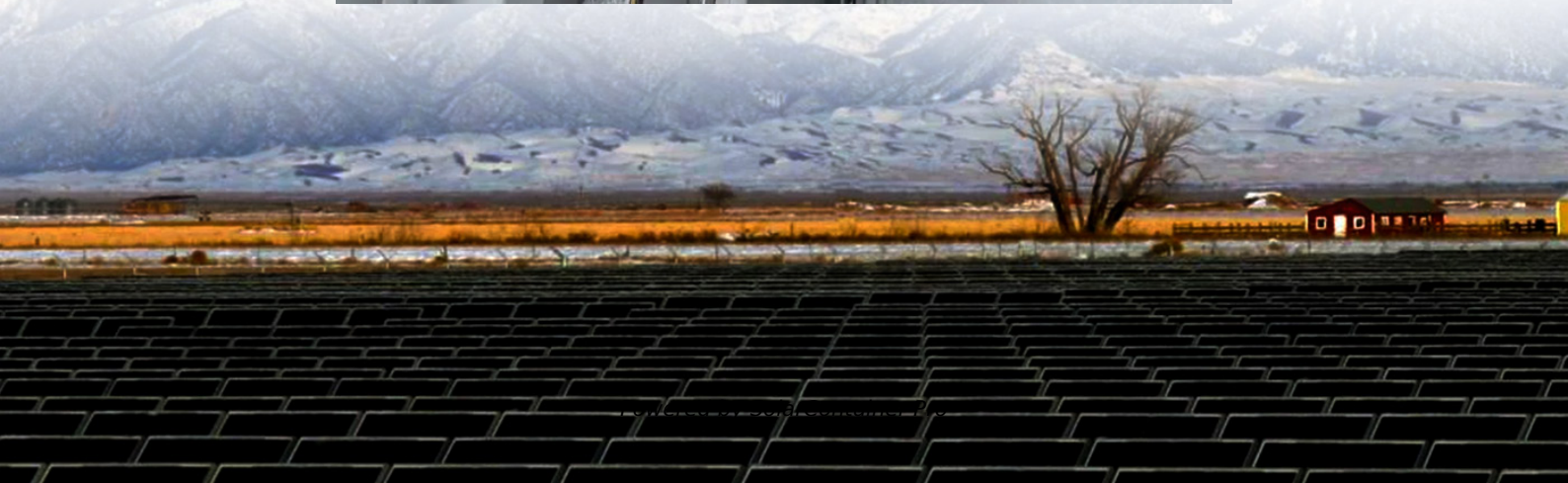


What are the components of a photovoltaic power station and energy storage station





Overview

A stand-alone system with energy storage (a battery) will have more components than a PV-direct system. This fact sheet will present the different solar PV system components and describe their use in the different types of solar PV systems.

Solar photovoltaic (PV) energy systems are made up of different components. Each component has a specific role. The type of component in the.

A charge controller regulates the amount of charge going into the battery from the module to keep from overcharging the battery. Charge controllers can vary in the amount of amperage they can regulate. Some models will include additional features such as.

A direct current (DC) disconnect switch is installed between the inverter load and the solar array. The disconnect switch is used to safely de-energize the array and isolate the inverter from the.

Safety disconnect switches are required by the National Electric Code (NEC) on the AC-side of the inverter to safely disconnect and isolate the inverter from the AC circuit. This is for troubleshooting and performing maintenance on the system. For grid-connected systems.

A solar panel system includes several crucial components: solar panels (the array), racking and mounting fixtures, inverters, a disconnect switch, and an optional solar battery for energy storage. What are the major components of a solar photovoltaic system?

The major components of the solar photovoltaic system are listed below. Photovoltaic (PV) Panel PV panels or Photovoltaic panel is a most important component of a solar power plant. It is made up of small solar cells. This is a device that is used to convert solar photon energy into electrical energy.

What is a solar photovoltaic (PV) energy system?

Solar photovoltaic (PV) energy systems are made up of different components. Each component has a specific role. The type of component in the system depends on the type of system and the purpose.



What is a photovoltaic power plant?

A photovoltaic power plant is a large-scale PV system that is connected to the grid and designed to produce bulk electrical power from solar radiation. A photovoltaic power plant consists of several components, such as: Solar modules: The basic units of a PV system, made up of solar cells that turn light into electricity.

What are the components of a solar power plant?

Here's a detailed description of the key components of a solar power plant: Solar panels are the heart of a solar power plant. They are made up of solar cells that convert sunlight into electricity through the photovoltaic effect. These panels are typically made of crystalline silicon or thin-film materials.

What are the parts of a solar power system?

Each part of a solar power system is crucial. This includes solar panels, batteries, racking systems, and inverters. They help use solar energy efficiently. Thanks to technology and companies like Fenice Energy, we're moving towards a clean energy future. Solar panels are at the forefront of the solar power movement.

What are the components of a solar panel system?

A solar panel system includes several crucial components: solar panels (the array), racking and mounting fixtures, inverters, a disconnect switch, and an optional solar battery for energy storage.



What are the components of a photovoltaic power station and energy storage



How much does a photovoltaic energy storage power station cost?

The cost of a photovoltaic energy storage power station can be understood through several critical factors. 1. **Initial investment varies significantly depending on location and ...

[WhatsApp](#)

Solar Power Plant - Types, Components, Layout and Operation

The solar power plant is also known as the Photovoltaic (PV) power plant. It is a large-scale PV plant designed to produce bulk electrical power from solar radiation.

[WhatsApp](#)



Solar Power Plants: Types, Components and Working Principles

Solar modules: The basic units of a PV system, made up of solar cells that turn light into electricity. Solar cells, typically made from silicon, absorb photons and release ...

[WhatsApp](#)



A holistic assessment of the photovoltaic-energy storage ...

The Photovoltaic-energy storage-integrated Charging Station (PV-ES-I CS) is a facility that integrates PV power generation, battery storage,



and EV charging capabilities (as ...

[WhatsApp](#)



What does a photovoltaic energy storage power station rely on to ...

Photovoltaic energy storage systems fundamentally depend on solar cells, which are the primary components that convert sunlight into electricity. These cells leverage the ...

[WhatsApp](#)



What Are the Main Components of a Photovoltaic Power Station?

A photovoltaic (PV) power station consists of several key components that work together to convert solar energy into usable electricity. The main components include: 1.

[WhatsApp](#)



[What are the key components of a solar power plant?](#)

Solar power plant construction consists of various components that work together to capture, convert, and distribute solar energy into electricity. Here's a detailed description of ...

[WhatsApp](#)





Powering the Future: How Power Stations and Solar Panels Work ...

The Role of Solar Panels in Power Stations Solar panels are devices that convert sunlight into electricity through photovoltaic (PV) cells. When integrated into power stations, ...

[WhatsApp](#)



[What are the main components of a solar power system?](#)

This guide aims to help beginners understand the various solar system components and their functions, ensuring a smooth transition to solar energy for your home or vehicle.

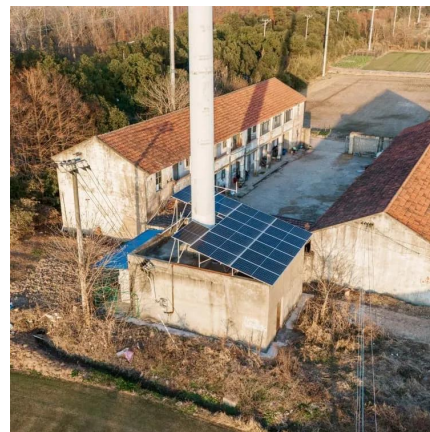
[WhatsApp](#)



6.1. Main components of large PV systems , EME 812: Utility Solar Power

To accomplish the proper power conditioning, we need a number of specialized components (in addition to the PV modules), and we are going to take a closer look at some of those ...

[WhatsApp](#)



[Solar Photovoltaic \(PV\) System Components](#)

A stand-alone system with energy storage (a battery) will have more components than a PV-direct system. This fact sheet will present the different solar PV system components and describe ...

[WhatsApp](#)



Unveiling the Blueprint: The Schematic Diagram of a Solar Power ...

A solar power plant, also known as a photovoltaic power plant, is a facility that generates electricity from sunlight. It utilizes solar panels to convert sunlight into electricity, providing a ...

[WhatsApp](#)



Contact Us

For catalog requests, pricing, or partnerships, please visit:
<https://straighta.co.za>