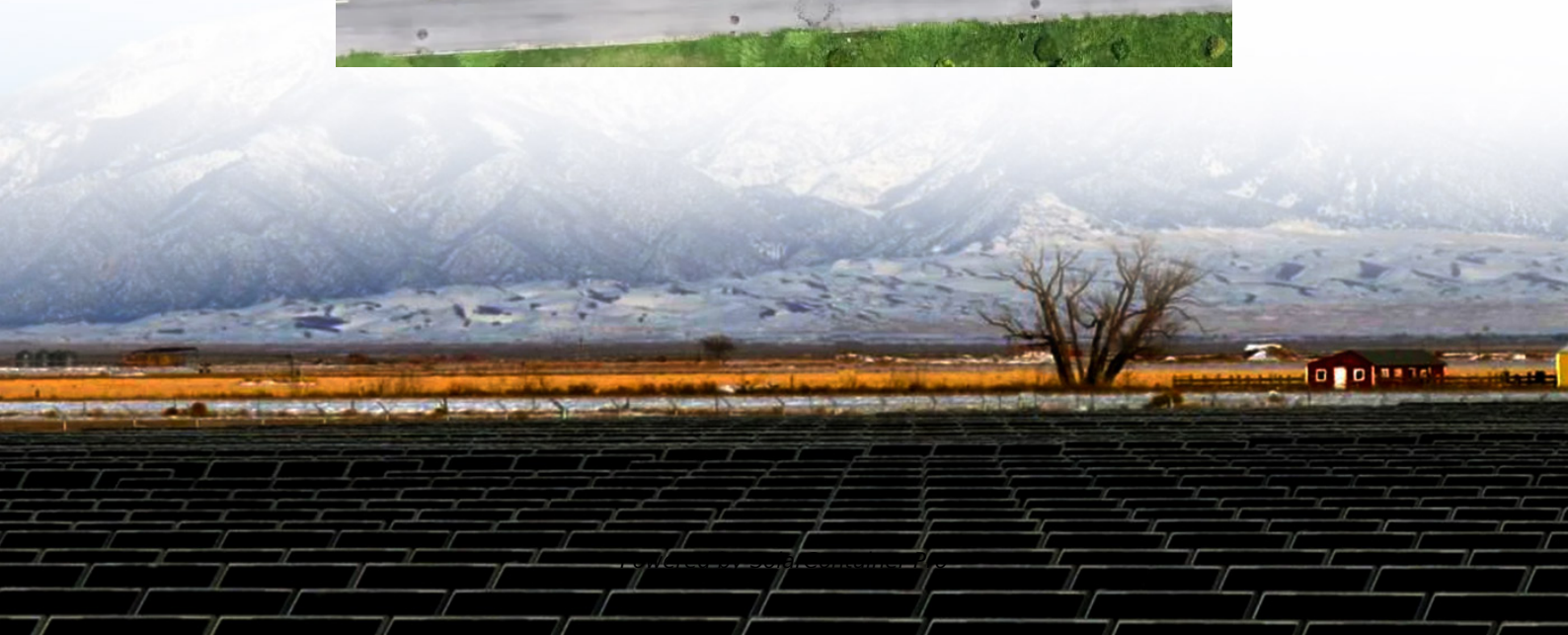


Measuring the angle and size of photovoltaic panels





Overview

How do I find the best angle for my solar panels?

Simply enter your address and it will provide the optimal angles for each season, as well as a year-round average angle for your specific location. An example of the calculator results. Discover the best angle for your solar panels with our Solar Panel Tilt Angle Calculator. Maximize energy efficiency and save money!.

What is a solar panel angle calculator?

The latitude is the angular distance of a location from the equator and is measured in degrees north or south of the equator. The solar panel angle calculator uses the latitude of the installation location to determine the optimal tilt angle for the solar panel based on the season and desired energy output.

How do I adjust the angle of a solar panel?

Many solar angle calculators are available online for free. 4. Adjust the tilt angle of the solar panel. Once you have determined the optimal angle, you can adjust the tilt angle of the solar panel by using a mounting bracket that allows for angle adjustments.

What angle should a solar panel be tilted?

Note: To allow for rain to naturally clean solar panels, installers usually limit tilt angles to 10°. What's the Best Angle for Solar Panels?

The most common answer to this question is to set the angle of your solar panels equal to your latitude. So, if your latitude is 30°, you'd set your solar panel tilt angle to 30° from horizontal.

How does the angle of a solar panel affect its energy output?

The angle of a solar panel affects its energy output, as it determines the



amount of sunlight the panel receives over a day and a year. In general, the tilt angle of a solar panel is set to maximize its energy output by capturing the maximum amount of sunlight over the course of a year.

Do photovoltaic panels need to be angled towards the Sun?

To get the best out of your photovoltaic panels, you need to angle them towards the sun. The optimum angle varies throughout the year, depending on the seasons and your location and this calculator shows the difference in sun height on a month-by-month basis.



Measuring the angle and size of photovoltaic panels



[Best Angle for Solar Panels: It's Not Your Latitude](#)

Once you select your location, the calculator automatically calculates your optimal solar panel angle. According to our calculator, the best angle for solar panels in Houston is ...

[WhatsApp](#)

[Best Angle for Solar Panels: It's Not Your Latitude](#)

Below is an overview of the angles involved in calculating the amount of solar radiation that a PV panel receives at any given time (also see Figure 3). The angle at which the sun hits a PV ...

[WhatsApp](#)



Influence of the Incidence Angle Modifier and Radiation as a ...

1. Introduction The conversion of solar energy in solar modules is subject to electrical and optical losses [1, 2]. Optical losses are substantially depending on light incidence angle relative to the ...

[WhatsApp](#)

[How to measure the angle size of photovoltaic panels](#)

The table shows the efficiency loss of solar panels at different angles. At a 90-degree angle (flat), solar panels have a 10% efficiency loss,



and as the angle deviates from 90

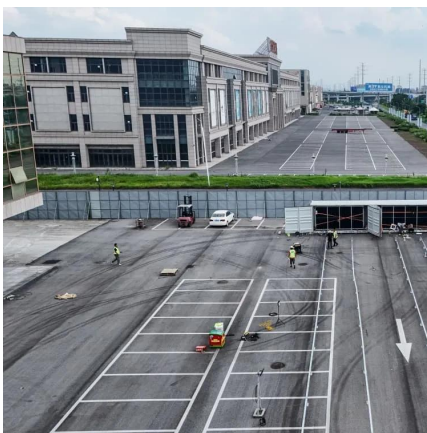
[WhatsApp](#)



How to measure the radiation size of photovoltaic panels

How to measure solar panel size. Residential solar panels usually hold 60 cells, while larger 72-cell panels are used for commercial installations. Countries That Use the ...

[WhatsApp](#)



[Solar Angle Calculator , Solar Panel Angle Calculator](#)

To get the best out of your photovoltaic panels, you need to angle them towards the sun. The optimum angle varies throughout the year, depending on the seasons and your location and ...

[WhatsApp](#)



How to Find the Best Orientation and Angle of Solar Panels?

Putting solar panels at the optimal angle and to the best orientation is essential to obtain the maximum energy in a solar power system. To maximize the energy conversion efficiency, use ...

[WhatsApp](#)





[Photovoltaic Efficiency: Solar Angles & Tracking Systems](#)

Below is an overview of the angles involved in calculating the amount of solar radiation that a PV panel receives at any given time (also see Figure 3). The angle at which the sun hits a PV ...

[WhatsApp](#)



How to measure the radiation size of photovoltaic panels

To get the most sun reaching the panel throughout the day, you need to determine what direction the panels should face and Solar Panel Size. It focuses on maximum electricity generation ...

[WhatsApp](#)

[Solar Panel Angle: Definition, and How to Calculate](#)

A solar panel angle calculator is a tool used to determine the ideal tilt angle for solar panels based on a range of factors such as location, time of year, and required energy ...

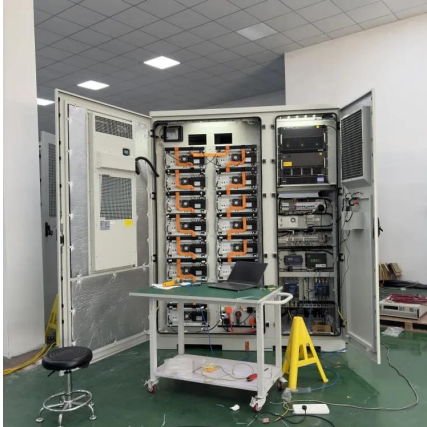
[WhatsApp](#)



[How to calculate the angle of solar panels.](#) [NenPower](#)

The angle at which solar panels are installed significantly affects their energy production; therefore, carefully calculating this angle is essential for anyone looking to optimize ...

[WhatsApp](#)



Contact Us

For catalog requests, pricing, or partnerships, please visit:
<https://straighta.co.za>