

# **Is the 4G base station equipment indoors or outdoors**





## Overview

---

What is 4G LTE base station?

New Product Release! The 4G LTE Base Station includes Remote Radio Head (RRH) which typically feature 2x2 or 4x4 MIMO, which are located on the tower top. The LTE RRH is connected to the baseband ENodeB using fibre optic cables with CPRI technology and DC power.

What is 4G & 5G LTE base station market?

The 4G and 5G LTE Base Station market is segmented by application into telecommunications, public safety, defense, industrial, and others. Telecommunications is the dominant application segment, as the primary function of base stations is to facilitate mobile communication.

Does CableFree offer a 5Ghz base station?

CableFree offers Band 46 5GHz LTE Base Station and Outdoor CPE devices for operation in Unlicensed 5GHz spectrum, enabling smaller operators and private customers to build LTE without requiring access to licensed spectrum. Band 46 covers 5150 – 5925MHz and uses TDD-LTE technology. Contact CableFree for details.

What is the growth factor for 4G & 5G LTE base station?

The primary growth factor for the 4G and 5G LTE Base Station market is the exponential increase in mobile data traffic. As the world becomes more interconnected, the number of devices requiring internet capability grows, leading to a surge in demand for robust telecommunication infrastructure.

What is a CableFree Emerald 4G & 5G LTE base station?

All of the the CableFree range of LTE products feature latest generation technology and upgradable features for future-proof networking and performance. CableFree Emerald 4G & 5G LTE Software Defined Base Stations with advanced features and “stand alone” capability for private networks.



Which 4G/LTE CPE devices are available?

CableFree offers a wide range of 4G/LTE CPE devices for indoor and outdoor applications, fixed, mobile and nomadic users, buildings and vehicles. These CPE devices are fully 3GPP standards compliant and can be used with either CableFree LTE Base Station infrastructure or other brands or pre-existing 4G networks.



## Is the 4G base station equipment indoors or outdoors

---



### Quick guide: components for 5G base stations and antennas

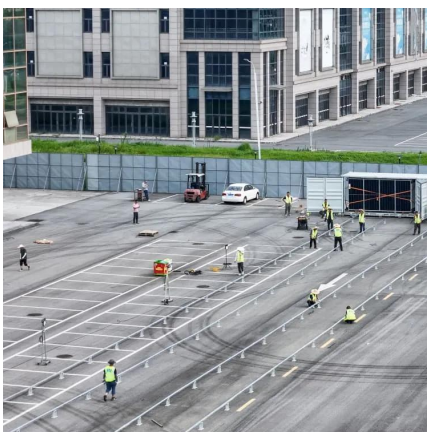
Base stations A 5G network base-station connects other wireless devices to a central hub. A look at 5G base-station architecture includes various equipment, such as a 5G ...

[WhatsApp](#)

### 4G LTE/5G Fixed Wireless: Indoor Gateway vs. Outdoor Receiver

The Bottom Line Fixed wireless internet powered by 4G LTE/5G gives you the freedom of wireless with the performance of a home connection. The difference isn't the ...

[WhatsApp](#)



### 4G 5G Lte Base Station Market Report , Global Forecast From ...

The 4G and 5G LTE Base Station market is segmented by deployment mode into indoor and outdoor. Indoor deployment involves the installation of base stations within buildings or ...

[WhatsApp](#)

### 4G 5G Lte Base Station Market Report , Global Forecast From ...

The 4G and 5G LTE Base Station market is segmented by deployment mode into indoor and outdoor. Indoor deployment involves the





installation of base stations within ...

[WhatsApp](#)



### Base Station Equipment Sales on the Rise According to 4G-5G ...

Shipments are still dominated by indoor CPE (60 percent), followed by battery-operated hot spots (25 percent) and outdoor CPE (15 percent). Within outdoor CPE, flexible ...

[WhatsApp](#)



### The main difference between 4G and 5G base stations-Technical ...

However, there is a difference between 4G base station equipment and 5G base station equipment. As shown in the figure above, 4G base station equipment is composed of BBU ...

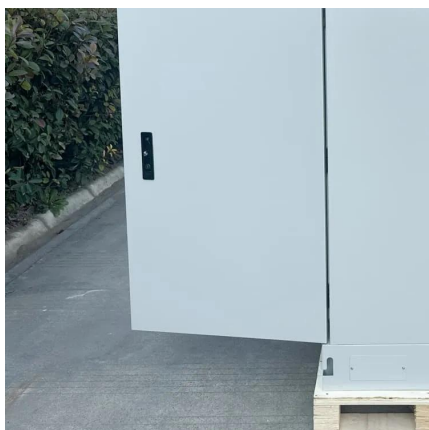
[WhatsApp](#)



### Compact Outdoor Cabinet for 5G & 4G Base Stations

The Compact Outdoor Cabinet for Base Station is designed to house telecom equipment in space-constrained outdoor environments. With a weatherproof and corrosion-resistant ...

[WhatsApp](#)





### [4g base station Market: a comprehensive analysis 2035](#)

o Huawei announced in May 2024 the launch of the 4G LTE-based base station family, the Celestia LTE Pro series, designed to boost capacity in dense urban areas and offer enhanced ...

[WhatsApp](#)



### [Unity\(TM\) 4G Enterprise Femtocell\\_Unity\(TM\) 4G Indoor ...](#)

Unity(TM) 4G Enterprise Femtocell Specification is an integrated base station based on LTE technology, which supports access to the backbone network through wired backhaul, provides ...

[WhatsApp](#)

### **4G + 5G Indoor Outdoor RRU - Vicinity Technologies Limited**

Vicinity's 4+5G Indoor Pico RRU is a radio frequency unit for 5G NR outdoor type base stations. It works with a baseband unit (NR BBU) to form a complete 4G + 5G base station used in mobile ...

[WhatsApp](#)



### **CF4G-Base-Station-Small-Cell CableFree 4G-LTE Cellular Base Station**

4G/LTE networks using CableFree Emerald 4G SDR Small Cell base stations enjoy great flexibility, high performance as well as very low cost of operation and ownership. "Stand Alone" ...

[WhatsApp](#)



## Contact Us

---

For catalog requests, pricing, or partnerships, please visit:  
<https://straighta.co.za>