

How many volts does a 5kw inverter use





Overview

The 48V specification refers to the input voltage, meaning it is designed to work with a 48 - volt DC power source, commonly used in many off - grid and hybrid solar power systems. The idle power consumption of a 5kW 48V inverter is influenced by several factors. How does a 5kw solar inverter work?

Solar panels generate DC electricity when exposed to sunlight. The 5kw inverter takes this DC power and converts it into AC power, which is used to power household appliances. The inverter ensures that the electricity is at the correct voltage and frequency for home use.

What is a 5kw inverter?

A inverter is an electrical device that converts direct current (DC) to alternating current (AC) at a capacity of 5 kilowatts. It's commonly used to transform the DC electricity generated by batteries or solar panels into AC electricity suitable for household appliances. How does a 5kw inverter differ from other inverter capacities?

.

How many watts can a 5kw inverter handle?

A 5kW inverter can handle up to 5,000 watts of power, which means it can supply enough electricity to run your house if your peak power demand is less than or equal to 5,000 watts. However, this does not mean that you can use 5,000 watts of power all the time.

Is a 5 kW inverter enough?

An inverter transforms the direct current (DC) from solar panels into alternating current (AC), powering your home's appliances. A common choice for households is a 5kW inverter, capable of managing up to 5,000 watts. But is a 5 kW inverter enough for your needs?

This depends on your energy consumption, solar system size, and usage



times.

How many watts can a 5000-watt inverter power?

A 5000-watt inverter can produce 5000 watts of power per hour to run appliances. It is sufficient to power several high-end household appliances at the same time, but you may not be able to use all of them at once. Instead, connect one appliance at a time while using multiple devices simultaneously.

How long can a 5000 watt inverter run?

A 5000 watts, 48V inverter can run for 6 hours when the power load factor is 0.8 and the volt-ampere is 130 amperes. The battery must provide a minimum of 130 amperes in this case. A 5000W inverter could generate sufficient energy to power more than 5 household types of equipment without an additional power supply.



How many volts does a 5kw inverter use



How much power does an inverter 5kw 48v consume when idle?

In general, the idle power consumption of a 5kW 48V inverter can range from a few watts to around 20 - 30 watts. However, this can vary widely depending on the factors ...

[WhatsApp](#)

How Many Volts Does a 5kW Inverter Use Key Insights for Solar ...

Voltage Basics for 5kW Inverters A 5kW inverter typically operates within 24V to 48V DC input ranges, converting stored DC energy from batteries into usable AC power.

[WhatsApp](#)



Why a 5kw Inverter? The Magic Size

A inverter is an electrical device that converts direct current (DC) to alternating current (AC) at a capacity of 5 kilowatts. It's commonly used to transform the DC electricity generated by ...

[WhatsApp](#)

How Many Lithium Batteries Are Needed to Power a 5kW 110V ...

A 5kW 110V inverter typically requires 4-6 lithium batteries (48V 400-600Ah) for reliable operation. Key factors include voltage



configuration, lithium chemistry advantages, ...

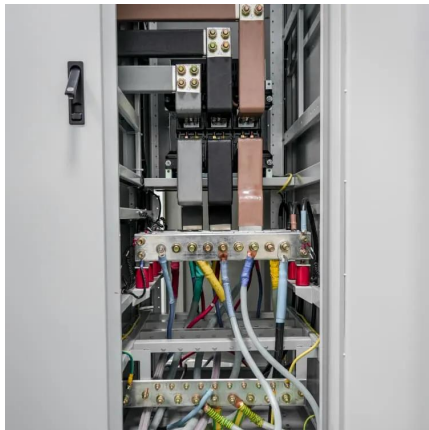
[WhatsApp](#)



How Many Lithium Batteries Are Needed to Power a 5kW 110V Inverter?

A 5kW 110V inverter typically requires 4-6 lithium batteries (48V 400-600Ah) for reliable operation. Key factors include voltage configuration, lithium chemistry advantages, ...

[WhatsApp](#)



Inverter Current Calculator

How to Use the Inverter Current Calculator To use the inverter current calculator, follow these steps: Input the power rating (in watts or kilowatts) of your inverter. Enter the input voltage of ...

[WhatsApp](#)



Powering Your Dream Home: Can a 5kW Inverter Get the Job ...

A 5kW inverter is designed to convert up to 5,000 watts of DC power into AC power, making it suitable for small to medium-sized homes or systems with lower energy requirements.

[WhatsApp](#)





How much power does an Inverter use just sitting there idling?

Hello, Quick question. I have a 24V 3000W pure sine wave inverter powering two 15A circuits. The inverter itself uses about 30W running a 500W load. There are some times ...

[WhatsApp](#)



Inverter Power Calculator & Formula Online Calculator Ultra

High-efficiency inverters waste less power as heat and are more economical to use. How does rated power affect inverter selection? The rated power determines the maximum ...

[WhatsApp](#)

What Size Lithium Battery Do I Need for a 5kW Inverter?

To power a 5kW inverter, you typically need a lithium battery capacity of around 200Ah at 48V or 400Ah at 24V. This capacity ensures sufficient energy storage for typical usage scenarios, ...

[WhatsApp](#)



How much power can inverter provide on battery mode?

How would i calculate maximum output on battery mode for certain inverter? Also, which inverter in europe would you recommend for off grid use and possible connection to grid ...

[WhatsApp](#)



Contact Us

For catalog requests, pricing, or partnerships, please visit:
<https://straighta.co.za>