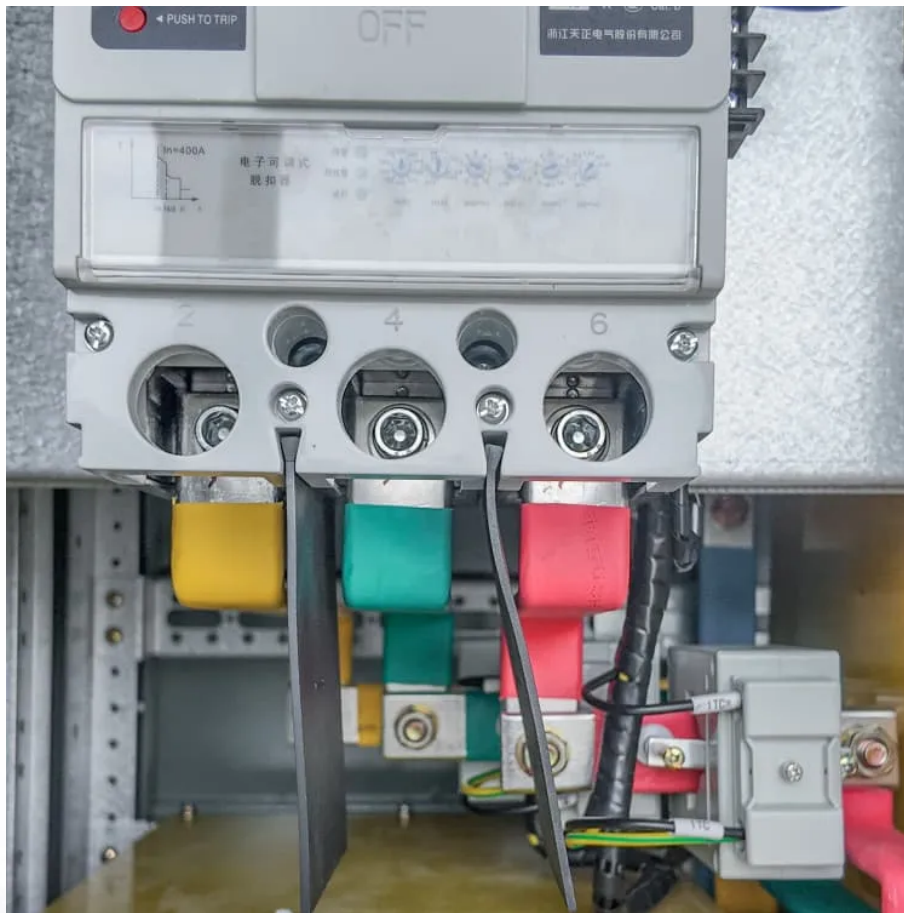


How big of a DC inverter do I need for a 100W AC





Overview

Before we go any further, we highly recommend that you choose a pure sine wave inverter. This type of inverter delivers high-quality electricity, similar to your utility company. This way, none of your appliances run the risk of being damaged. Now, when it comes to sizing your inverter, you always need to check.

We have summarized the appliances that inverters from 300W to 3000W can run depending on their rated maximum power. Note to our readers: Use the above formula to determine.

You need an inverter with a capacity that is around 20% higher than your largest power output. Your 100 watt solar panel specifications and calculations are important. Generally, a 12v DC to 220v AC, 200-watt inverter would be able to run your AC-powered appliances with a 100-watt solar panel. What size inverter do I Need?

The right size inverter for your specific application depends on how much wattage your devices require. This information is usually printed somewhere on electronic devices, although it may show voltage and amperage ratings instead.

How to calculate inverter size?

Using the Inverter Size Calculator is quick and easy. You'll need three inputs: Total Wattage (W): This is the total power consumption of all the appliances or devices you plan to run through the inverter. Safety Factor: A multiplier to ensure some buffer above your actual power requirement. Typically ranges from 1.1 to 1.5.

How much wattage should I add to my inverter?

If you are able to find the specific wattages for your devices, you'll want to add them together to get a bare minimum figure. This number will be the smallest inverter that could possibly suit your needs, so it's a good idea to add between 10 and 20 percent on top and then buy an inverter that size or larger.



How to size a 1500 watt power inverter?

A rule-of-thumb for sizing your 1500-watt power inverter is to combine the wattage of all the devices you are planning to use at the same time (don't forget basic necessities, like lights) and give yourself 20% headroom.

How much power does an inverter need?

The continuous power requirement is actually 2250 but when sizing an inverter, you have to plan for the start up so the inverter can handle it. Third, you need to decide how long you want to run 2250 watts. Let's say you would like to power these items for an eight-hour period.

What size cable do I need for a 3500W inverter?

For inverters rated up to 3500W, the cable size should be 1/0 AWG, sufficient to handle the startup and continuous current required. Another consideration is the inline fuse, as this will protect both sides of the system in the event of a shortage in the system. To ascertain the fuse you need, divide the AC wattage by the DC Voltage.



How big of a DC inverter do I need for a 100W AC



[What Size Inverter You Need \(Calculations + Battery\)](#)

The size of the inverter required will be determined by the total wattage of the appliances you need to operate and the time they need to run. You also need to add a bit ...

[WhatsApp](#)

What Size Inverter Do You Need? A Complete Guide for Home, ...

Choosing the right inverter size is crucial--too small, and your appliances won't work; too large, and you'll waste money. This guide will help you determine the ideal inverter ...

[WhatsApp](#)



What Size Inverter Do I Need for a Refrigerator? A Guide to ...

Introduction: Choosing the right inverter for your refrigerator is crucial to ensure it functions efficiently. An inverter converts direct current (DC) into alternating current (AC), ...

[WhatsApp](#)

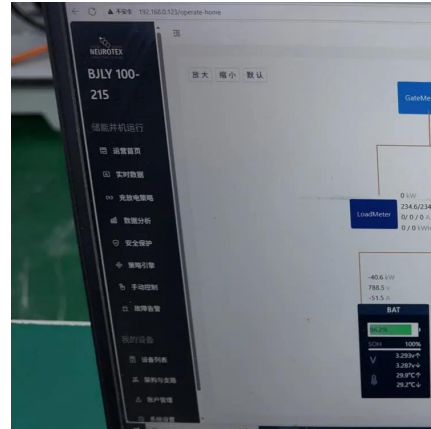
Inverter Size Calculator & Formula Online Calculator Ultra

Find More Calculator ? Historical Background
Inverters have become a crucial part of power systems, especially with the rise of solar energy



and off-grid power solutions. An ...

[WhatsApp](#)



[What Size Inverter do I Need? \[with Examples\]](#)

The size of the inverter that you need greatly depends on the anticipated usage. All the devices that you plan to run at the same time have to be added and then pick the inverter closest for ...

[WhatsApp](#)



Can Air Conditioner Run On Inverter? , Smart AC Solutions

Yes, an air conditioner can run on an inverter, but several key factors must be considered for optimal performance. First, ensure that your air conditioner is specifically rated ...

[WhatsApp](#)



Find the Right Inverter Size: How Big An Inverter Do You need?

The right size inverter for your specific application depends on how much wattage your devices require. This information is usually printed somewhere on electronic devices, ...

[WhatsApp](#)

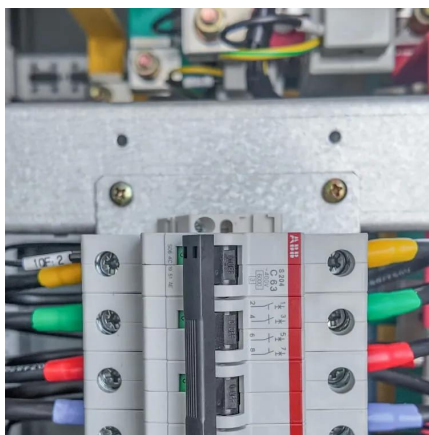




[What Size Inverter Do I Need for a 100 Watt Solar Panel](#)

You will also find a quick and easy guide for calculating what size inverter you need, and different types of inverters. You will also find out which batteries and solar charge controllers you will ...

[WhatsApp](#)



[What Size Inverter Do I Need to Run a TV and DVD Player](#)

What Size Inverter Do I Need to Run a TV and DVD Player? As more and more people enjoy the convenience of recreational vehicles (RVs) and camping trips, the need for power sources to ...

[WhatsApp](#)

[What Size Inverter For a 100W Solar Panel?](#)

A 12V 100W solar panel needs a 12V 200W inverter to run AC powered appliances, and at least a 100ah battery to store energy. A 12V 5A PWM or MPPT charge controller is required to keep ...

[WhatsApp](#)



Contact Us

For catalog requests, pricing, or partnerships, please visit:
<https://straighta.co.za>