

# **How big is the grid-connected area of the communication base station inverter**





## Overview

---

What is grid connected inverter technology?

Grid-connected inverters—control types and harmonic performance Inverter technology is the key technology to have reliable and safety grid interconnection operation of PV system. It is also required to generate high quality power to ac utility system with reasonable cost.

What is grid interconnection of PV power generation system?

Grid interconnection of PV power generation system has the advantage of more effective utilization of generated power. However, the technical requirements from both the utility power system grid side and the PV system side need to be satisfied to ensure the safety of the PV installer and the reliability of the utility grid.

Why is inverter important for grid-connected PV systems?

Grid interconnection of PV systems is accomplished through the inverter, which convert dc power generated from PV modules to ac power used for ordinary power supply to electric equipments. Inverter system is therefore very important for grid-connected PV systems.

What are the limitations of a grid-powered base station?

The only constraint on these systems is whether or not location is available or not, unlike grid powered base stations which require adequate power source at a particular location for maximum coverage. Flexibility in location is extremely helpful in remote areas where power availability is low.

How do inverters affect the utility grid?

Harmonic disruptions from inverters can pass to the utility grid. These power disruptions cause voltage spikes and impulse-like effects in the high voltage winding. Such power disruptions can wreak havoc at the transformer and downwind on the grid.



How does a solar grid tie inverter work?

output with that of the grid. Solar grid-tie inverters are designed to instantly disconnect from the grid if the utility grid goes down to ensure that in the event of a blackout, the grid tie inverter will shut down to prevent the energy it produces from harming any line workers who are



## How big is the grid-connected area of the communication base station

---



### Telecommunication base station system working principle and ...

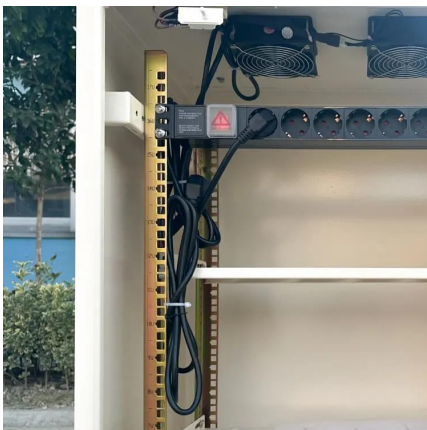
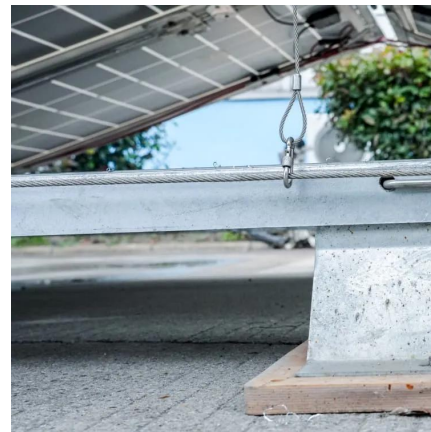
The system can effectively store the direct current generated by solar panels in the battery, which can effectively solve the problem of living and industrial electricity in remote ...

[WhatsApp](#)

### How Solar Energy Systems are Revolutionizing Communication Base

Energy consumption is a big issue in the operation of communication base stations, especially in remote areas that are difficult to connect with the traditional power grid, ...

[WhatsApp](#)



### Grid-connected photovoltaic power systems: Technical and ...

This paper aims to investigate and emphasize the importance of the grid-connected PV system regarding the intermittent nature of renewable generation, and the characterization ...

[WhatsApp](#)

### Multi-objective cooperative optimization of communication base station

Recently, 5G communication base stations have steadily evolved into a key developing load in the distribution network. During the operation



process, scientific dispatching ...

[WhatsApp](#)



### [DESIGNING OF GRID CONNECTED INVERTER FOR PV ...](#)

public grid is achieved by using proper inverters. Care must be exercised to choose inverter units with the highest efficiency. During the daytime, the solar generator provides power for the ...

[WhatsApp](#)



### [Design of 50 MW Grid Connected Solar Power Plant](#)

In this paper the standard procedure developed was affirm in the design of a 50MW grid connected solar PV. This paper contains the different diagrams and single line diagrams that ...

[WhatsApp](#)



### **How Solar Energy Systems are Revolutionizing Communication ...**

Energy consumption is a big issue in the operation of communication base stations, especially in remote areas that are difficult to connect with the traditional power grid, ...

[WhatsApp](#)

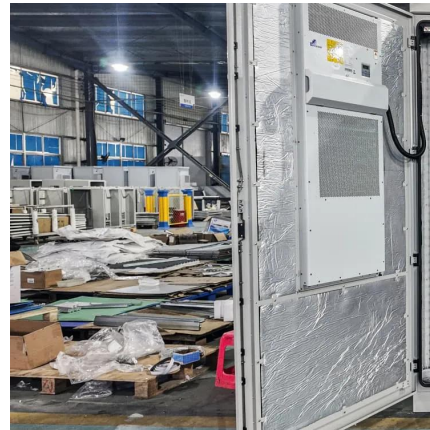




### Hybrid Inverter and Lithium Batteries: Setup Guide and Best ...

set up communication between lithium batteries and a hybrid inverter with our detailed step-by-step guide. Ensure optimal performance and longevity of your energy storage system by ...

[WhatsApp](#)



### communication base station structure ,Tronyan Communication Base

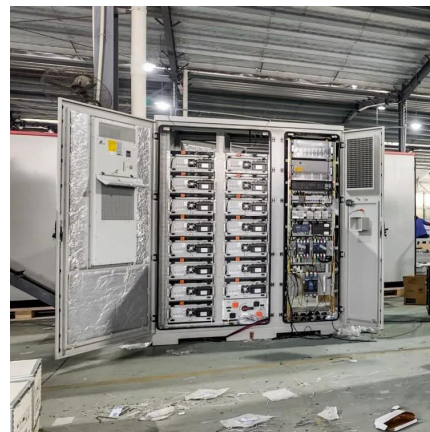
What is the maximum coverage area of a single Tronyan communication base station? Hi Carlos, a single Tronyan base station can cover up to 30 kilometers, depending on terrain, ...

[WhatsApp](#)

### What sets a proper grid-forming inverter apart from a regular ...

I have been told here that disconnecting solar panels with micro-inverters (like Enphase, APsystems or NEP) from the grid, and connecting a power station to the group ...

[WhatsApp](#)



## Contact Us

For catalog requests, pricing, or partnerships, please visit:  
<https://straighta.co.za>