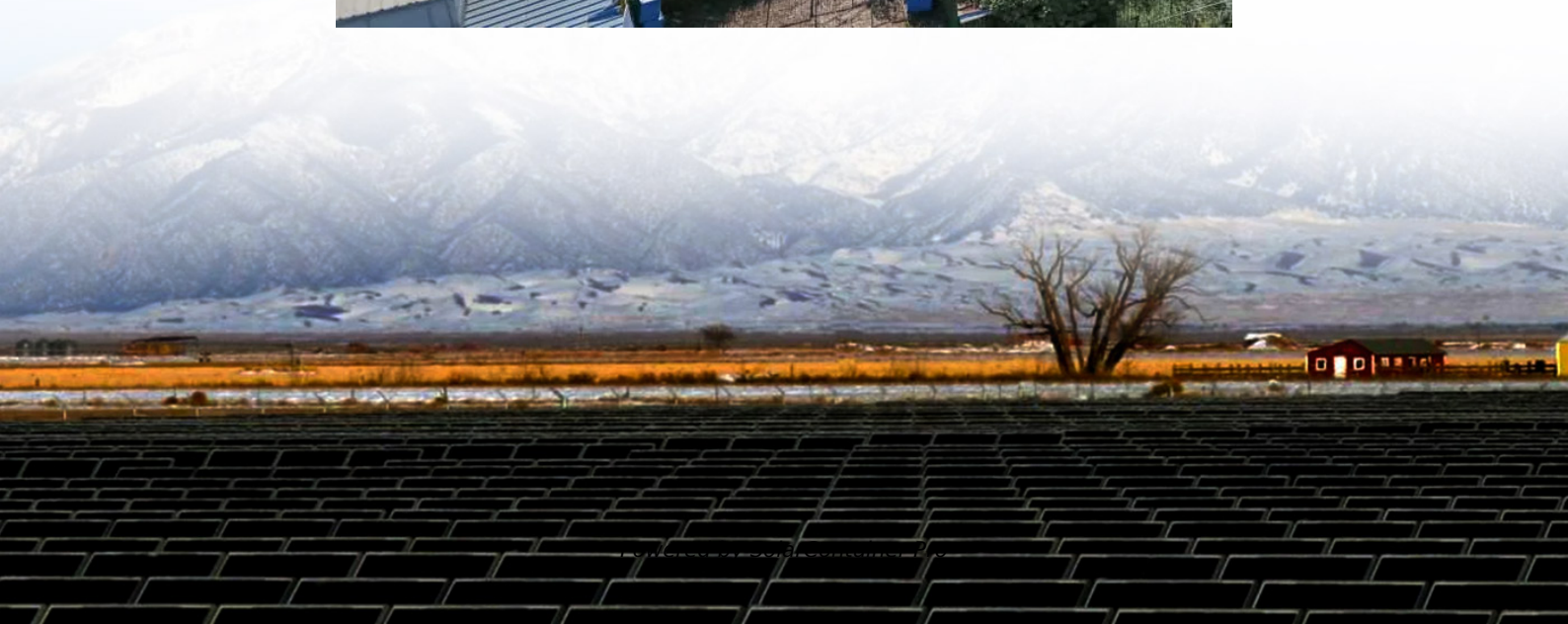


# Double-glass photovoltaic panel





## Overview

---

Double-glass solar modules are made up of two layers of tempered glass that cover both sides of the solar panel. As snow accumulates on a typical solar panel or people stomp on it (during installation), the solar cells bend dramatically, resulting in microcracks on the cells.

There is a clear distinction between single and double glass solar panels. This difference should be clear by this- .

The front surface of double glass mono solar cells has an emitter layer and the back side has a dark covering. Passivated Emitter and Rear.

Typically, solar panels have a front glass panel and a back plastic sheet. These single-sided glass panels are supported by frames across the.



## Double-glass photovoltaic panel

---



### What is the Double Glass (Dual Glass) Photovoltaic Solar Panel?

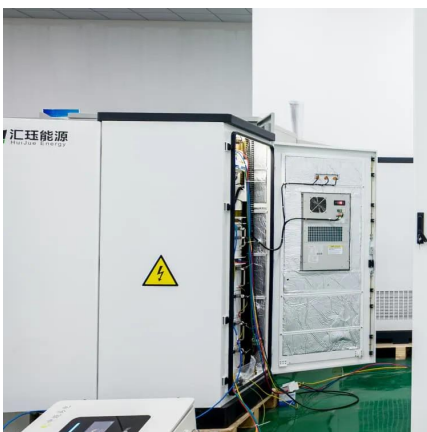
What is the Double Glass Photovoltaic Solar Panel? Glass-glass module structures (Dual Glass or Double Glass) is a technology that uses a glass layer on the back of the ...

[WhatsApp](#)

### The Recycling Value Battle: Double - Glass vs Single - Glass

Evaluating the Recycling Value In terms of recycling value, double - glass panels may have an edge. The additional glass layer, if properly recycled, can yield a significant ...

[WhatsApp](#)



### Flexible vs. Rigid Double-Glass Solar Panels: Which One is Your ...

As an advanced iteration of rigid solar panels, double-glass modules were developed to enhance efficiency, durability, and versatility, making them a standout choice in the solar market. This ...

[WhatsApp](#)

### Bifacial solar panels: Benefits & Installation Scenarios ...

3.Glass/backsheet: Similar to its bifacial counterparts, it has a glass front-side and a non-transparent backsheet on the back. Maysun's HJT





is a glass-glass ...

[WhatsApp](#)



[What is the Double Glass Photovoltaic Solar Panel?](#)

What is the Double Glass Photovoltaic Solar Panel? Glass-glass module structures (Dual Glass or Double Glass) is a technology that uses a glass layer on the back of the modules instead of ...

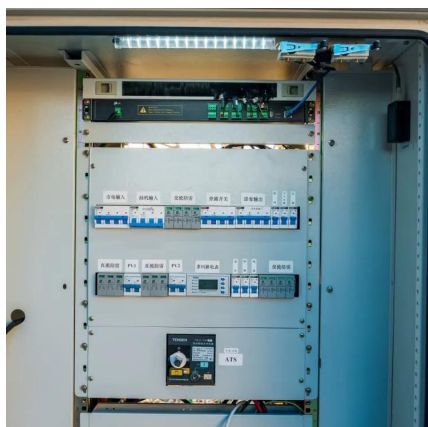
[WhatsApp](#)



### Experimental repair technique for glass defects of glass-glass

A failure of growing importance is the defect in the glass layer (s) of glass-glass PV modules. In this research, an experimental glass repair technique for glass-glass PV modules ...

[WhatsApp](#)



**What advantages does double glass solar photovoltaic panels ...**

Double-sided modules are photovoltaic modules that can generate electricity on both sides. When the sun shines on double-sided modules, part of the direct solar radiation and scattered light ...

[WhatsApp](#)



### [Longi Hi MO-7 620W Bifacial Double Glass Solar Panel](#)

The Longi 620W Bifacial Double Glass Solar Panel is a high-performance photovoltaic module designed for utility-scale, commercial, and industrial solar installations. Combining advanced N ...

[WhatsApp](#)



### **Why Dual-Glass is the best solar panel technology for rooftops**

The combined strength of using two sheets of glass makes the solar panel less prone to becoming deformed or for microcracks to form in the cells. Installing dual-glass ...

[WhatsApp](#)

## **Contact Us**

---

For catalog requests, pricing, or partnerships, please visit:  
<https://straighta.co.za>