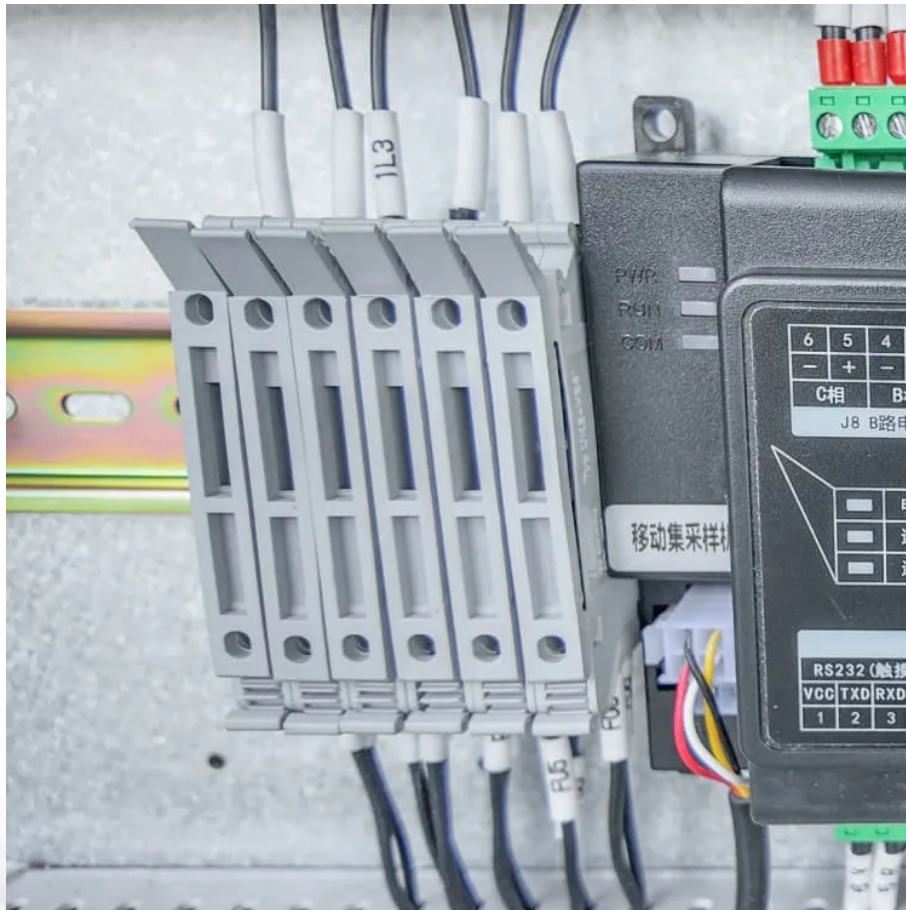


Does the high-rise communication green base station have a battery





Overview

Which battery is best for telecom base station backup power?

Among various battery technologies, Lithium Iron Phosphate (LiFePO₄) batteries stand out as the ideal choice for telecom base station backup power due to their high safety, long lifespan, and excellent thermal stability.

What makes a telecom battery pack compatible with a base station?

Compatibility and Installation Voltage Compatibility: 48V is the standard voltage for telecom base stations, so the battery pack's output voltage must align with base station equipment requirements. Modular Design: A modular structure simplifies installation, maintenance, and scalability.

Should telecommunication operators invest in a telecom battery backup system?

Investing in a telecom battery backup system is always one of the priorities for telecommunication operators in the 5G era. Sunwoda 48V telecom batteries have a capacity covering 50Ah-150Ah, which can easily meet the power backup needs of macro and micro base stations.

How do you protect a telecom base station?

Backup power systems in telecom base stations often operate for extended periods, making thermal management critical. Key suggestions include: Cooling System: Install fans or heat sinks inside the battery pack to ensure efficient heat dissipation.

What is the impact of base stations?

The impact of the Base Stations comes from the combination of the power consumption of the equipment itself (up to 1500 Watts for a nowadays macro base station) multiplied by the number of deployed sites in a commercial network (e.g. more than 12000 in UK for a single operator).



What is a wide temperature range LiFePO4 battery?

This translates to lower replacement frequency and maintenance costs. Wide Temperature Range LiFePO4 batteries operate reliably in temperatures ranging from -20°C to 60°C , making them suitable for the diverse and often extreme environments of telecom base stations.



Does the high-rise communication green base station have a batter



Understanding Wyze Outdoor Camera: Do You Need a Base Station?

However, many potential users wonder whether they need a base station to use this innovative device effectively. This article delves deep into the Wyze Outdoor Camera's ...

[WhatsApp](#)

Revolutionising Connectivity with Reliable Base Station Energy ...

Base station energy storage refers to batteries and supporting hardware that power the BTS when grid power is unavailable or to smooth out intermittent renewable sources like ...

[WhatsApp](#)



Technical Specifications for Ring Alarm Devices

The range for Z-Wave communication is up to 250 feet between the Base Station and the security device. Familiarize yourself with Z-Wave technology and mesh networks to better understand ...

[WhatsApp](#)

Rooftop tower base station: the 'invisible communication giant' ...

The core mission of the rooftop tower base station is to expand signal coverage. In the vast and remote mountainous areas with complex



terrain and dispersed populations, traditional ground ...

[WhatsApp](#)



Telecom Base Station Backup Power Solution: Design Guide for ...

Among various battery technologies, Lithium Iron Phosphate (LiFePO4) batteries stand out as the ideal choice for telecom base station backup power due to their high safety, ...

[WhatsApp](#)



Upgrading or Replacing Your Ring Alarm Base Station

We've made it easier to replace and upgrade your Base Station from a Ring Alarm to the Ring Alarm Pro version. The app will help you save all of your existing Ring Alarm devices and ...

[WhatsApp](#)



Energy-Efficient Base Stations , part of Green Communications

The impact of the Base Stations comes from the combination of the power consumption of the equipment itself (up to 1500 Watts for a nowadays macro base station) multiplied by the ...

[WhatsApp](#)

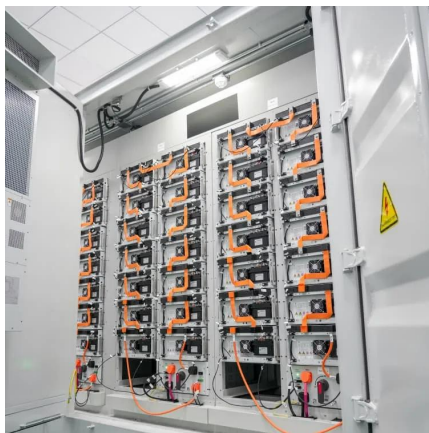




Types and Applications of Mobile Communication Base Stations

Mobile communication base station is a form of radio station, which refers to a radio transceiver station that transmits information between mobile phone terminals through a ...

[WhatsApp](#)



[Keypad and Base Station LED Patterns Explained](#)

Keypad and Base Station LED Patterns Explained
What are the lights on your Keypad or Base Station telling you? Here are tips for how to clear unexplained lights on these devices. ...

[WhatsApp](#)

The Role of Hybrid Energy Systems in Powering Telecom Base Stations

These systems also often incorporate battery storage to store excess energy for use during low renewable energy generation, making them highly versatile for powering ...

[WhatsApp](#)



[Communication Base Station Energy Solutions](#)

During the day, the solar system powers the base station while storing excess energy in the battery. At night, the energy storage system discharges to supply power to the base station, ...

[WhatsApp](#)



[Base Station's Role in Wireless Communication Networks](#)

What is a base station? A base station is a critical component of wireless communication networks. It serves as the central point of a network that connects various devices, such as ...

[WhatsApp](#)



[Base station energy storage expert , EK Solar Energy](#)

We offer industrial-grade batteries in various voltage ranges, typically spanning from mid-voltage to high-voltage systems, ensuring scalability and compatibility with different energy demands.

[WhatsApp](#)



[Cooling for Mobile Base Stations and Cell Towers](#)

BackgroundUnattended base stations require an intelligent cooling system because of the strain they are exposed to. The sensitive telecom equipment is operating 24/7 with continuous load ...

[WhatsApp](#)





[Ch. 9: Communication Problems in High-Rise Emergencies](#)

- Overwhelming Traffic: High-rise emergencies often result in a high volume of radio traffic, with many officers trying to transmit simultaneously.
- Missed Communications: Crucial radio calls ...

[WhatsApp](#)

[Base Station \(Gen 3\) Overview and Installation Guide](#)

Overview The Base Station is the brains of your system. It sends alarm signals to the monitoring center* with built-in cellular and Wi-Fi connections, a battery backup that lasts up to 24 hours, ...

[WhatsApp](#)



[Telecom Battery Backup System , Sunwoda Energy](#)

Investing in a telecom battery backup system is always one of the priorities for telecommunication operators in the 5G era. Sunwoda 48V telecom batteries have a capacity covering 50Ah ...

[WhatsApp](#)

Contact Us

For catalog requests, pricing, or partnerships, please visit:
<https://straighta.co.za>