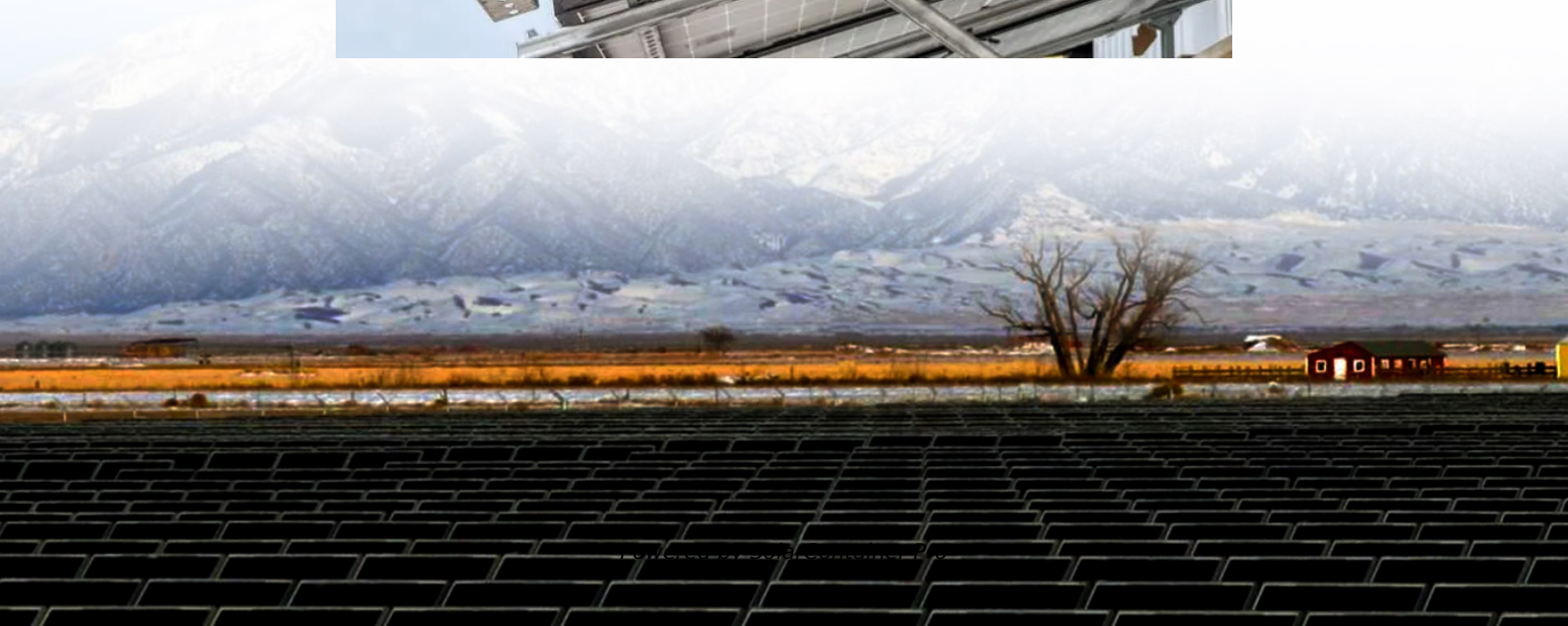




SolarContainer Pro

Current maximum power of photovoltaic panels





Overview

The Maximum Power Current rating (I_{mp}) on a solar panel indicates the amount of current produced by a solar panel when it's operating at its maximum power output (P_{max}) under ideal conditions.

What is the maximum power voltage of a solar panel?

Usually, most of the companies manufacturing solar panels specify the maximum power voltage (V_{mp}) of the panels. This voltage usually ranges from 70 - 80% of the panels' open-circuit voltage (V_{oc}). I_{mpp} refers to the maximum power point current. This shows the current value in amperes, while the power output is full.

What is a maximum power current rating on a solar panel?

The Maximum Power Current, or I_{mp} for short. And the Short Circuit Current, or I_{sc} for short. The Maximum Power Current rating (I_{mp}) on a solar panel indicates the amount of current produced by a solar panel when it's operating at its maximum power output (P_{max}) under ideal conditions.

What is the maximum power point of a solar panel?

"Maximum power point is a combination of voltage and current," Gong explains. "It's the combination of volts and amps that creates the highest wattage. "If you lower the current and increase the voltage, you move away from the maximum power point," he continues. Typically, solar panels are rated between 250 and 400 watts.

What is maximum power point (P_m) of a solar cell?

It is the amperage you would want to see when connected to solar equipment. The maximum power point (P_m) of a solar cell denotes the maximum amount of power a cell can deliver during its standard test condition. The efficiency η of a solar cell is an important criterion for the selection of a solar cell.

How much power does a solar panel produce?

Power: This is how much energy the panel can produce, measured in watts



(W). It's like how much water comes out of the hose overall. Power is found by multiplying voltage and current, giving watts (W). Most home solar panels make 250-400 watts. The power made depends on: Knowing these solar panel specifications helps you:.

What is maximum power current?

Maximum Power Current (I_{mp}): The current at your panel's most efficient operating point. You'll notice that solar panels are rated in watts. That's a very basic combination of the voltage and current. There's a simple formula worth remembering to bring these aspects altogether:



Current maximum power of photovoltaic panels



[Understanding the Specifications of Solar Panels and](#)

These conditions include a solar irradiance of 1,000 watts per square meter, solar cell temperature of 25°C, and 1.5 air mass. It's important to note that the rated wattage is ...

[WhatsApp](#)

Nominal Voltage, Voc, Vmp, Isc , Solar Panel Specifications

Isc is used to determine how many amps a panel can handle when connected to a device like a solar charge controller or an inverter circuit. This current is obtained when the ...

[WhatsApp](#)



Understand solar panel specification sheets and how to read them

On average, solar panel efficiency ranges from 15% to 20%, with some panels as high as 23%. As cell technology improves, so do efficiency ratings. A spec sheet also provides information ...

[WhatsApp](#)

Parameters of a Solar Cell and Characteristics of a PV Panel

Short circuit current is the maximum current produced by the solar cell, it is measured in ampere (A) or milli-ampere (mA). As can be seen



from table 1 and figure 2 that the open-circuit voltage ...

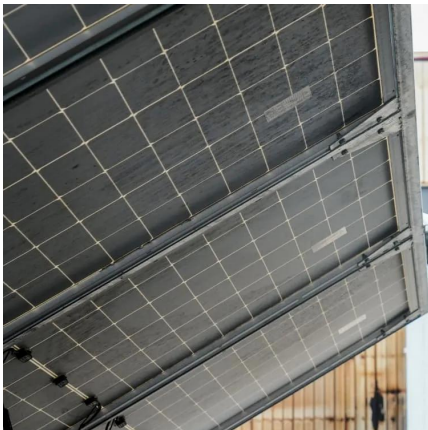
[WhatsApp](#)



Explicit model of photovoltaic panels to determine voltages and

A simple explicit photovoltaic formulation for characterizing and dimensioning cell-arrays is presented. The method permits the short-circuit current, the open-circuit voltage, the ...

[WhatsApp](#)



[Understanding Solar Panel Voltage and Current Output](#)

Short Circuit Current (I_{sc}): The maximum current your panel can produce in perfect conditions.
Maximum Power Current (I_{mp}): The current at your panel's most efficient operating point. ...

[WhatsApp](#)



[What is the maximum power of solar panels? . NenPower](#)

Modern solar cells can range from about 15% to over 22% for commercial products. The efficiency of solar panels is influenced by various factors, including the materials used in ...

[WhatsApp](#)





Solar Panel Ratings Explained - Wattage, Current, Voltage, and

The Maximum Power Current rating (I_{mp}) on a solar panel indicates the amount of current produced by a solar panel when it's operating at its maximum power output (P_{max}) ...

[WhatsApp](#)



Contact Us

For catalog requests, pricing, or partnerships, please visit:
<https://straighta.co.za>