

5G base station power supply current requirements





Overview

What is a 5G power supply?

The equipment ensures that devices across the infrastructure stack receive reliable power from the mains network, wherever they happen to reside. With it, individuals and organizations can continue to render services to both themselves and their customers. Overview The 5G network architecture uses multiple types of power supplies.

What are 5G infrastructure power supply considerations?

While the overall power draw is often lower, 5G equipment has narrower tolerances. It often needs multiple, precise voltages to operate correctly, with scarce leeway on either side. In the following section, we discuss 5G infrastructure power supply considerations in more detail. 5G delivers coverage to an area in a different way from 4G.

Do 5G equipment power supply units need to be compact?

Small cells will need to be able to fit in compact environments, such as traffic lights, utility poles, and rooftops. So power supply units will need to be compact, able to fit comfortably alongside the equipment they power. There are also considerable heat dissipation issues that 5G equipment power supply units will need to accommodate.

What are the requirements for a 5G network?

Requirements include units that work indoors and outdoors, offer surge protection, provide step changes in voltage, and come in form factors that are compatible with heterogeneous systems. The access side of the 5G stack includes user equipment such as smartphones, tablets, laptops, and desktop devices.

How do engineers design 5G base stations?

Engineers designing 5G base stations must contend with energy use, weight,



size, and heat, which impact design decisions. 5G New Radio (NR) uses Multi-User massive-MIMO (MU-MIMO), Integrated Access and Backhaul (IAB), and beamforming with millimeter wave (mmWave) spectrum up to 71 GHz.

What is a 5G backhaul power supply?

The backhaul part of the 5G network connects the access interface - including masts, eNodeB, and cell site gateway - to the mobile core and internet beyond. And just like the access equipment, it too has specific power supply requirements. Backhaul power supplies must cater to aggregation routers and core routers.



5G base station power supply current requirements



5G communication challenge to switching power supply-VAPEL

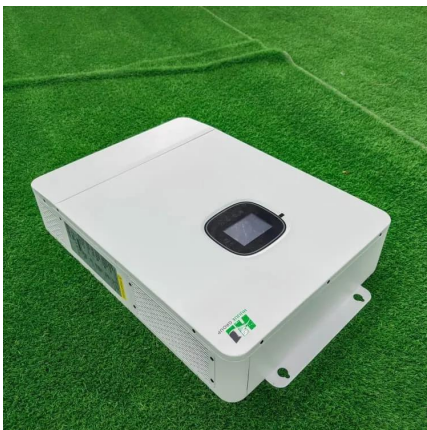
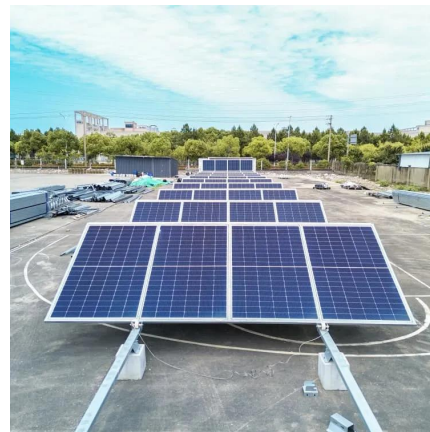
Therefore, most of them adopt the transformation and upgrading of the existing base stations and central offices, which means that the communication switching power supply needs to supply ...

[WhatsApp](#)

How to choose the right power supply for 5G base station ...

In addition, these 5G cells will also contain more integrated antennas to apply massive multiple-input, multiple-output (MIMO) technology for reliable connectivity. Therefore, a variety of state ...

[WhatsApp](#)



An optimal dispatch strategy for 5G base stations equipped with ...

The escalating deployment of 5G base stations (BSs) and self-service battery swapping cabinets (BSCs) in urban distribution networks has raised concerns regarding ...

[WhatsApp](#)

Modeling and aggregated control of large-scale 5G base stations ...

The limited penetration capability of millimeter waves necessitates the deployment of significantly more 5G base stations (the next



generation Node B, gNB) than their 4G ...

[WhatsApp](#)



[5G Base Station 48V Rectifier Outdoor Power Supply](#)

The Soetek Switch Mode Power Supply is a highly integrated outdoor 5G micro base station power supply system, it combines AC input power distribution, lightning protection, switching ...

[WhatsApp](#)



[Optimal configuration of 5G base station energy storage](#)

it, in the case of a power failure. As the number of 5G base stations, and their power consumption increase significantly compared with that of 4G base stations, the demand for backup batteries ...

[WhatsApp](#)



Distribution network restoration supply method considers 5G base

This paper proposes a distribution network fault emergency power supply recovery strategy based on 5G base station energy storage. This strategy introduces Theil's entropy ...

[WhatsApp](#)

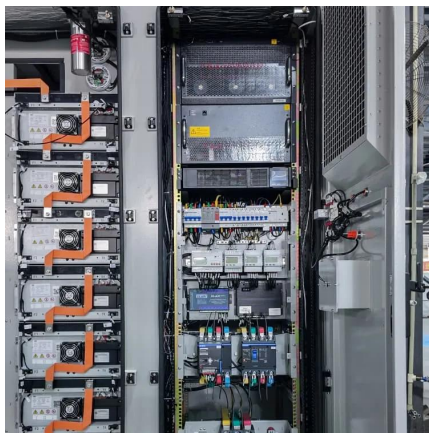
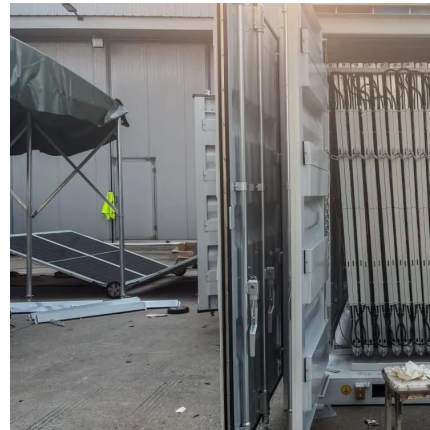




Selecting the Right Supplies for Powering 5G Base Stations

These tools simplify the task of selecting the right power management solutions for these devices and, thereby, provide an optimal power solution for 5G base stations components.

[WhatsApp](#)



Selecting the Right Supplies for Powering 5G Base Stations

These tools simplify the task of selecting the right power management solutions for these devices and, thereby, provide an optimal power solution for 5G base stations components.

[WhatsApp](#)

Selecting the Right Supplies for Powering 5G Base Stations ...

These tools simplify the task of selecting the right power management solutions for these devices and, thereby, provide an optimal power solution for 5G base stations components.

[WhatsApp](#)



ADI Technical Article: Choosing the Right Power Supply to Power 5G Base

These tools simplify the task of selecting the right power management solution for the device, so that the best power solution can be provided for 5G base station components.

[WhatsApp](#)



The power supply design considerations for 5G base stations

During quiescent periods--typically 5 ms to 100 ms--the PSU must minimize all load power with the basic functions of the antenna unit remaining active. It also must be able to ...

[WhatsApp](#)



5G infrastructure power supply design considerations (Part I)

Renesas' 5G power supply system addresses these needs and is compatible with the -48V Telecom standard, providing optimal performance, reduced energy consumption, and robust ...

[WhatsApp](#)



[Building better power supplies for 5G base stations](#)

Building better power supplies for 5G base stations Authored by: Alessandro Pevere, and Francesco Di Domenico, both at Infineon Technologies Infineon Technologies - Technical ...

[WhatsApp](#)





ADI Technical Article: Choosing the Right Power Supply to Power ...

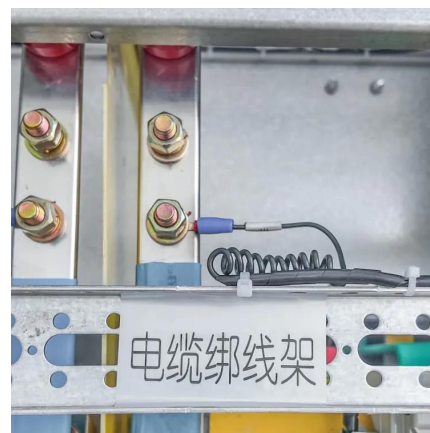
These tools simplify the task of selecting the right power management solution for the device, so that the best power solution can be provided for 5G base station components.

[WhatsApp](#)

5G macro base station power supply design strategy and ...

"In terms of primary power supply, we see a very obvious trend of requiring high efficiency and high power density. Now the efficiency of power supply should reach 97%, or ...

[WhatsApp](#)



Quick guide: components for 5G base stations and antennas

Base stations A 5G network base-station connects other wireless devices to a central hub. A look at 5G base-station architecture includes various equipment, such as a 5G ...

[WhatsApp](#)

Multi-objective cooperative optimization of communication base station

Recently, 5G communication base stations have steadily evolved into a key developing load in the distribution network. During the operation process, scientific dispatching ...

[WhatsApp](#)



Contact Us

For catalog requests, pricing, or partnerships, please visit:
<https://straighta.co.za>