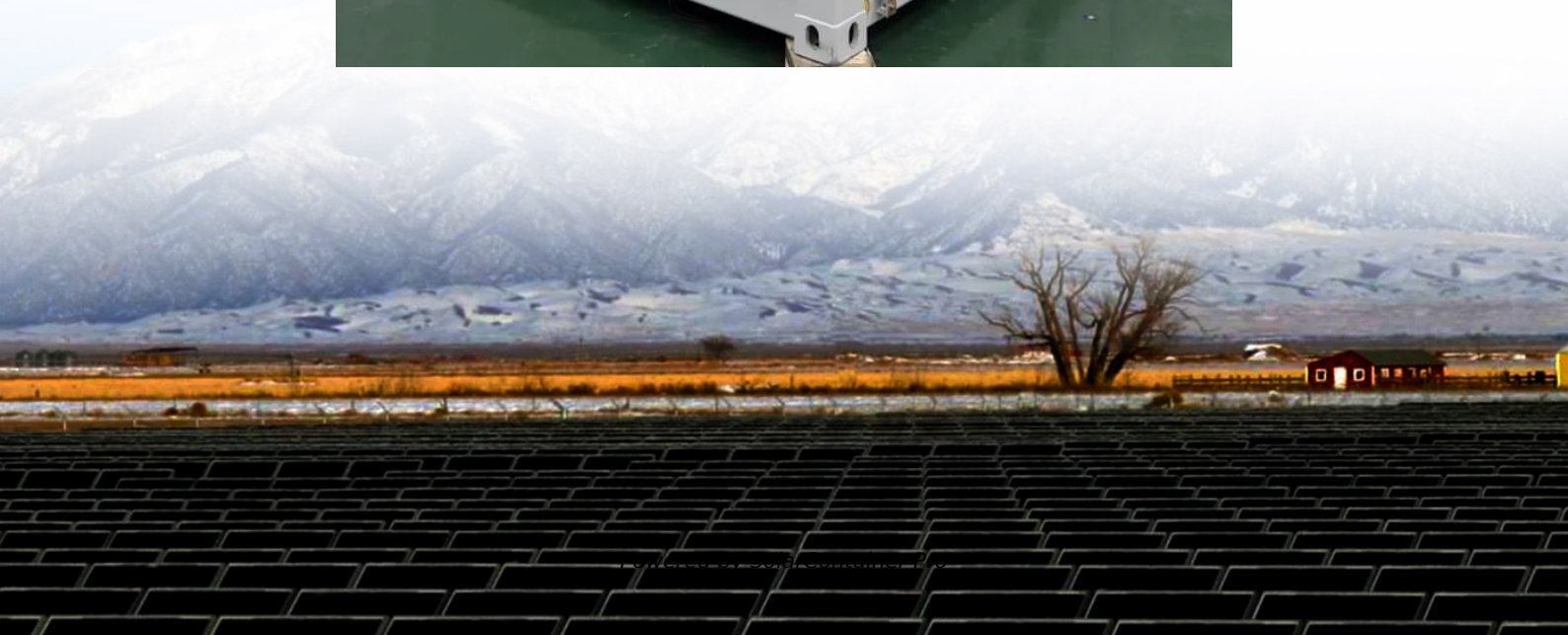


12v inverter drives 220v water pump inverter





Overview

Can a 220 volt inverter run a 12 volt pump?

An inverter is typically used to convert 12 volts DC to 110 or 220 volts AC. You can not put 220 VAC into an inverter and get 12 VDC out. Perhaps you've confused it with a power supply, which operates at 220 VAC input and has 12 VDC output. If your pump is surging then it's quite possible the power supply isn't strong enough to run the pump.

What is the best inverter for a solar water pump?

Best Inverter for Single Phase & Three Phase Solar Pumps: Conversion Kit Best Inverter for When the Grid is Down: Watersecure Watersecure System with batteries servicing a 110V AC pump for a household. The RPS Pro Controller takes DC solar power, chops it up into AC, three phase 220V to run a water pump.

Can an inverter run a well pump?

An inverter is a good choice to run a well pump if you need to pump high volumes of water, very deep wells or convert over your current AC pump over to solar power. Best Inverter Solar Pump Kit: Pro Deep and Pro Volume.

Can a 12 volt inverter run a 1/2 HP pump?

A 12 volt system will work for a 1/2HP pump, but go for an inverter with the pure sine waveform and expect to draw around 1100 watts to run it. However, You will have more inverter options if you opt to go with a 24 volt system. You'll need one that can handle a surge around 3000 watts for 1/4 second just to start the pump.

Can a solar inverter drive a water pump?

Let's explore them. Three solar inverters can drive a water pump and convert photovoltaic direct current into alternating current. It is an inverter designed for running water pumps using solar power. It directly transforms the direct



power produced by solar panels into an alternating current to drive the pump.

What rated power should a water pump inverter have?

For instance, if the water pump's rated power is 2kW, the selected inverter should have a rated power of 2kW or higher. If more system expansion is required, choose an inverter with a slightly higher rated power so that you don't need to replace it when the load is maximum.



12v inverter drives 220v water pump inverter



Inverter power for water pumps: the ultimate guide to keep your ...

Inverter technology offers a versatile solution for powering water pumps in a variety of applications. Understanding the compatibility factors, considering the advantages and ...

[WhatsApp](#)

[What Kind of Solar Inverter Can Drive a Water Pump?](#)

A solar pump inverter is a type of inverter specifically designed for driving water pumps using solar energy. Unlike traditional inverters, solar pump inverters are tailored to handle the variable ...

[WhatsApp](#)



[How do I convert my electric water pump to solar?](#)

The higher the HP of an electric water pump, you'll typically need more solar panels and a larger inverter. An inverter takes power from incoming DC voltage and turns the power into AC ...

[WhatsApp](#)



[Comparing Different Types of Water Pump Inverters](#)

In the realm of water pumping, inverters reign supreme as the unsung heroes, transforming ordinary pumps into veritable powerhouses.



Understanding the nuances of different inverter
...

[WhatsApp](#)



[How to power my 1/2 hp 220V well pump from an inverter](#)

A 12 volt system will work for a 1/2HP pump, but go for an inverter with the pure sine waveform and expect to draw around 1100 watts to run it. However, You will have more ...

[WhatsApp](#)



Is the Inverter 12v 220v 1500w suitable for powering a water pump?

As a supplier of the Inverter 12v 220v 1500w, I often get asked if this inverter is suitable for powering a water pump. Well, let's dive right into it and figure out if it's a good match.

[WhatsApp](#)



[What Kind Of Solar Inverters Can Drive a Water Pump?](#)

In short, selecting the right solar inverter for driving a water pump depends heavily on grid availability, location, and other application requirements. However, the best type is a ...

[WhatsApp](#)

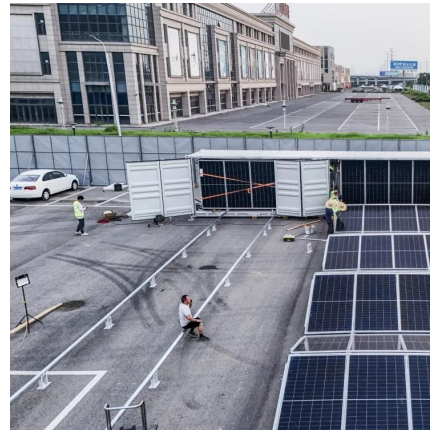




Dc Water Pump Inverter Converter

An inverter pump is a pump whose motor has a variable frequency drive (VFD) or inverter control that can vary the frequency of the voltage to the motor. This allows the pump to run at different ...

[WhatsApp](#)



Water Pump and Inverter Compatibility: The Ultimate Guide

However, a common question arises: can water pumps run on inverters? In this comprehensive blog post, we will delve into the technicalities and practicalities of using ...

[WhatsApp](#)

Contact Us

For catalog requests, pricing, or partnerships, please visit:
<https://straighta.co.za>