

12v battery smart inverter





Overview

What is a 12V battery inverter?

Inverters allow you to use 12V Dakota Lithium batteries to power household electronics that require 120V AC (the wall plug in your home). Rated at 1200VA and its RMS watts is 850, peak of 1000, this professional grade Victron inverter takes DC power (the power that comes from batteries or solar panels) and transforms it into AC power.

What is a 12V DC power inverter?

This is where a power inverter comes in. Definition and Working Principle A 12V DC power inverter is a device that converts low-voltage direct current (DC) power from a 12V battery (such as a car battery or deep-cycle battery) into 120V alternating current (AC) power, making it suitable for household appliances and electronic devices.

What is a 12V car power inverter?

A 12V car power inverter is a must-have for road trips, mobile workstations, and emergency preparedness. It allows drivers and passengers to charge and use electronic devices directly from the vehicle's battery or cigarette lighter port. Devices Powered: Laptops, smartphones, car refrigerators, small power tools, portable gaming consoles.

What type of power does a power inverter use?

In many off-grid or mobile power scenarios, standard household appliances require AC (alternating current) power, but most batteries and vehicle power systems provide DC (direct current) power at 12 volts. This is where a power inverter comes in. Definition and Working Principle.

Which 12V power inverter is best?

For reliability and performance, Topbull 12V power inverters are highly recommended. Known for their robust design and superior efficiency, Topbull's



inverters provide stable power for a wide range of applications. Here are three excellent options.

What is a victron 1200 watt inverter?

Victron 1200 watt inverter turns 12V DC battery power into 110V AC power, converter for RV, Van, Cabin, Marine, or off grid use. Shop now [dakota lithium](#).



12v battery smart inverter



[ACOPOWER 3000W/12V All-in-One Pure Sine Wave Hybrid ...](#)

The Inverter Charger not only acts as a DC to AC converter that allows you to power your household appliances but also charge and maintain a battery bank when connected to shore ...

[WhatsApp](#)

KickAss Smart 12V 120Ah Lithium Dual Battery Kit with 1000W Inverter,

This all-in-one lithium power kit is designed for efficient energy management in 4WDs, caravans, and camper trailers. Featuring a 120Ah Smart Lithium Deep Cycle Battery, a 25A DCDC ...

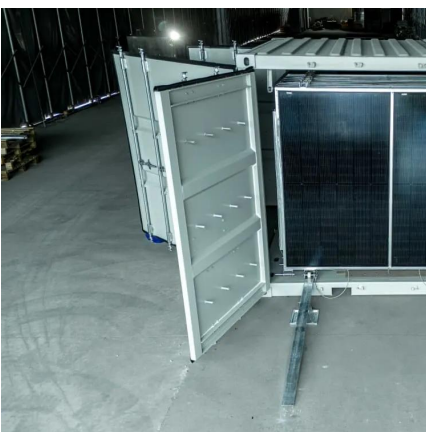
[WhatsApp](#)



Exploring the Best 12V Power Inverters: A Comprehensive Guide

At its core, a 12V power inverter is a device that converts direct current (DC) from a car battery into alternating current (AC), which is required by most household appliances. Think of it as a ...

[WhatsApp](#)



Open Box Victron Blue Smart IP67 12V 13A Battery Charger 120V

Founded in 2003, Inverters R Us is one of the largest Victron suppliers in the world. We are known for our system designs, technical/pre &



post sales support, massive inventory and ...

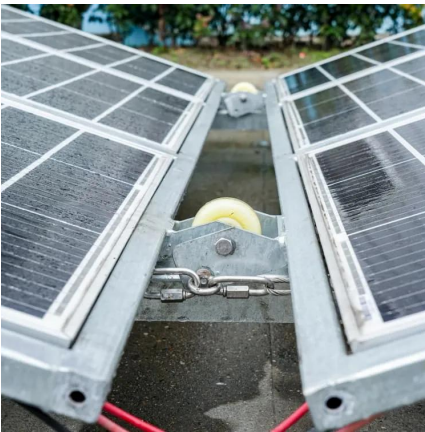
[WhatsApp](#)



[Microtek Smart Hybrid 1275/12V Sinewave Inverter](#)

Battery AnyWhere brings you a wide range of Microtek Smart Hybrid 1275/12V Sinewave Inverter available for online purchase. Explore our collection of batteries discover the perfect power ...

[WhatsApp](#)



ACOPOWER 3000W/12V All-in-One Pure Sine Wave Hybrid Solar Charger Inverter

The Inverter Charger not only acts as a DC to AC converter that allows you to power your household appliances but also charge and maintain a battery bank when connected to shore ...

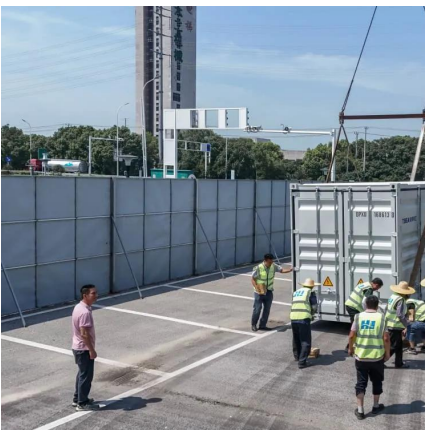
[WhatsApp](#)



12 Volt DC Power Inverter: In-Depth Learning and Buying Guide

A 12-volt DC power inverter is an essential device for converting 12V direct current (DC) from a battery into 120V alternating current (AC), allowing you to power standard ...

[WhatsApp](#)





[Buy Best Inverter Smart Hybrid UPS 1275. Microtek](#)

Inverter: "Microtek Smart Hybrid Digital & Sinewave Technologies UPS Model 1275 (12V), which is a Perfect Combination of Digital & Sinewave technologies which ensures Noiseless ...

[WhatsApp](#)



12V-220V/230V Battery Inverter , 3000 Watt Pure Sine Wave

Optimized for 12 VDC system voltage and work perfectly with all types of batteries. Both terminals are equipped with caps to ensure your safety. A compact design with 18.7 x 9.3 x 4.0 in and ...

[WhatsApp](#)



Smart Pro 1200 Pure Sine Wave 1000VA IoT Inverter for Home, ...

With a capacity of 1000VA/12V and support for a single 12V battery, it delivers a Maximum Peak Load of 780 Watts, making it suitable for powering essential appliances like fridges, LED TVs, ...

[WhatsApp](#)



Contact Us

For catalog requests, pricing, or partnerships, please visit:
<https://straighta.co.za>